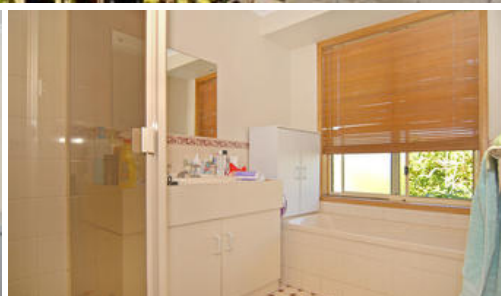
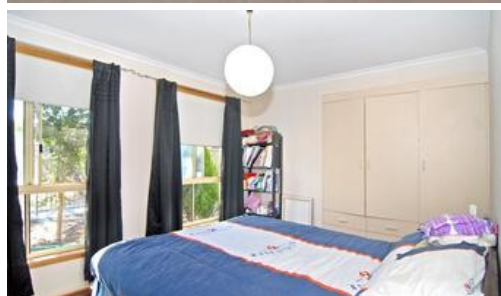


Sold



11B Somerset Ave, Clearview



Don't Miss your Opportunity! Adjacent Lightsvue at a Bargain Price!

This beautiful three bedroom home features one bathroom and open plan living area. It is equipped with solar panels, floating timber floorboards, gas heating and ducted evaporative cooling throughout! Front fencing and security screens on front and back doors provide ultimate security. Just minutes from local shops, schools, reserves and only a 15 minute drive to the CBD! This is an ideal property and location!

The kitchen includes features such as a raised breakfast bar, microwave provision, corner pantry, gas oven and cooktop, and range hood. Double bowl sinks and double drain board make for ease of kitchen maintenance!

The two double bedrooms contain built in robes and the third bedroom would make for a spacious single room or office space. The bathroom contains a luxury bath, vanity and pivot door shower alcove and comes with a separate W.C. Separate laundry room is equipped with an overhead cupboard and laundry trough and cabinet.

Outside you will find a spacious paved courtyard with covered pergola, perfect for entertaining guests, and a veggie patch in the garden.

🛏 3 🚿 1 🚗 2

Price	SOLD
Property Type	residential
Property ID	288

Agent Details

Trevor Priest - 0418 220 224

Office Details

Chateau Real Estate
642 Lower North East Rd Paradise
SA 5075 Australia
0883658211



The above information provided has been furnished to us by the vendor/s. We have not verified whether or not that information is accurate and do not have any belief in one way or the other in its accuracy. We do not accept any responsibility to any person for its accuracy and do no more than pass it on. All interested parties should make and rely upon their own inquiries in order to determine whether or not this information is in fact accurate.